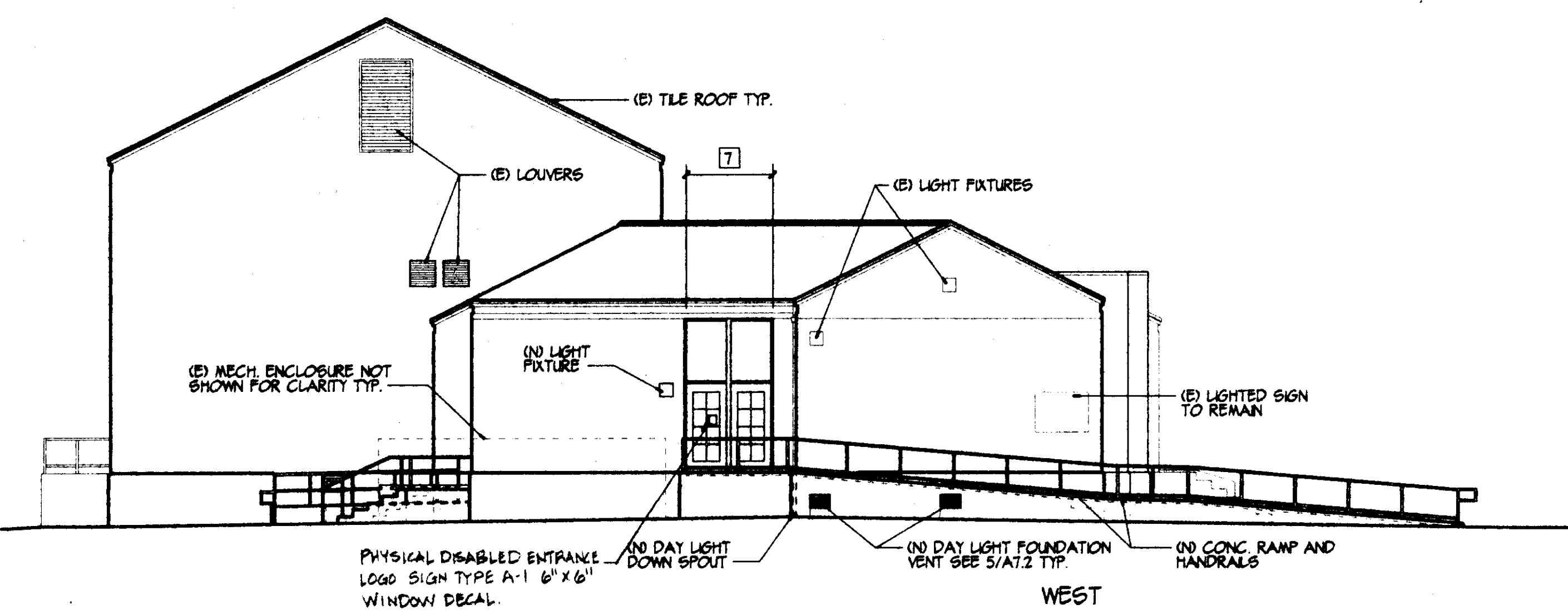
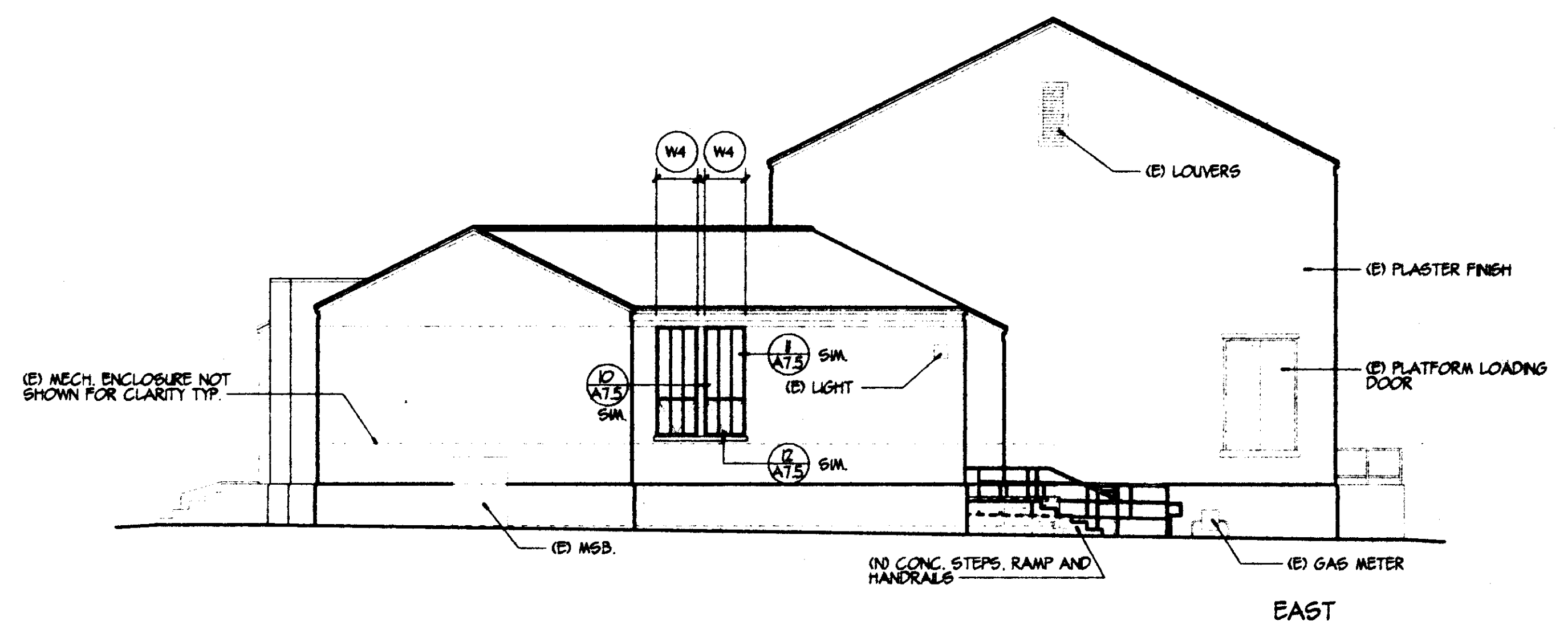


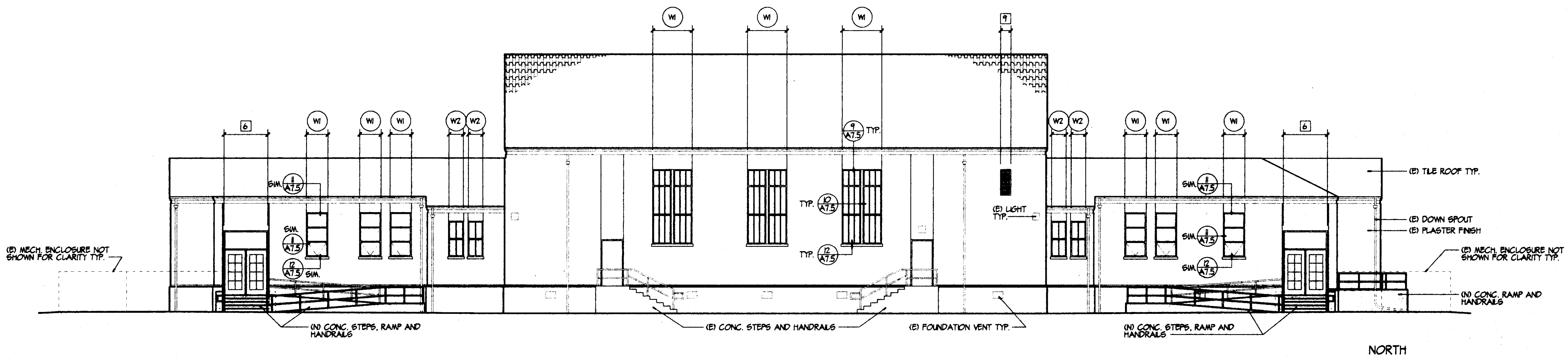
SOUTH



WEST



EAST



NORTH

EXTERIOR ELEVATIONS

Scale: 1/8" = 1'-0"

IDENTIFICATION STAMP
 CITY OF THE STATE ARCHITECT
 OFFICE OF REGULATION SERVICES
 ARCHITECT
 DATE

OPREC APPLICATION #711444-00-04
MODERNIZATION
 AT THE
GRAND ISLAND ELEMENTARY SCHOOL
 FOR THE
PERCE JOINT UNIFIED SCHOOL DISTRICT
 ARBUCKLE COLUSA COUNTY CALIFORNIA

THOMSON & HENDRICKS
 ARCHITECT AND PLANNERS
 Paul Henderson, A.I.A. 9503 342-9889
 E-Mail: thenderson@mmt.com

OF
 DRAWING NO.
A5
 CHECKED BY P.J.H.
 DRAWN BY A.C.D./J.T.S.
 DATE 01-25-98
 JOB NO. 9809